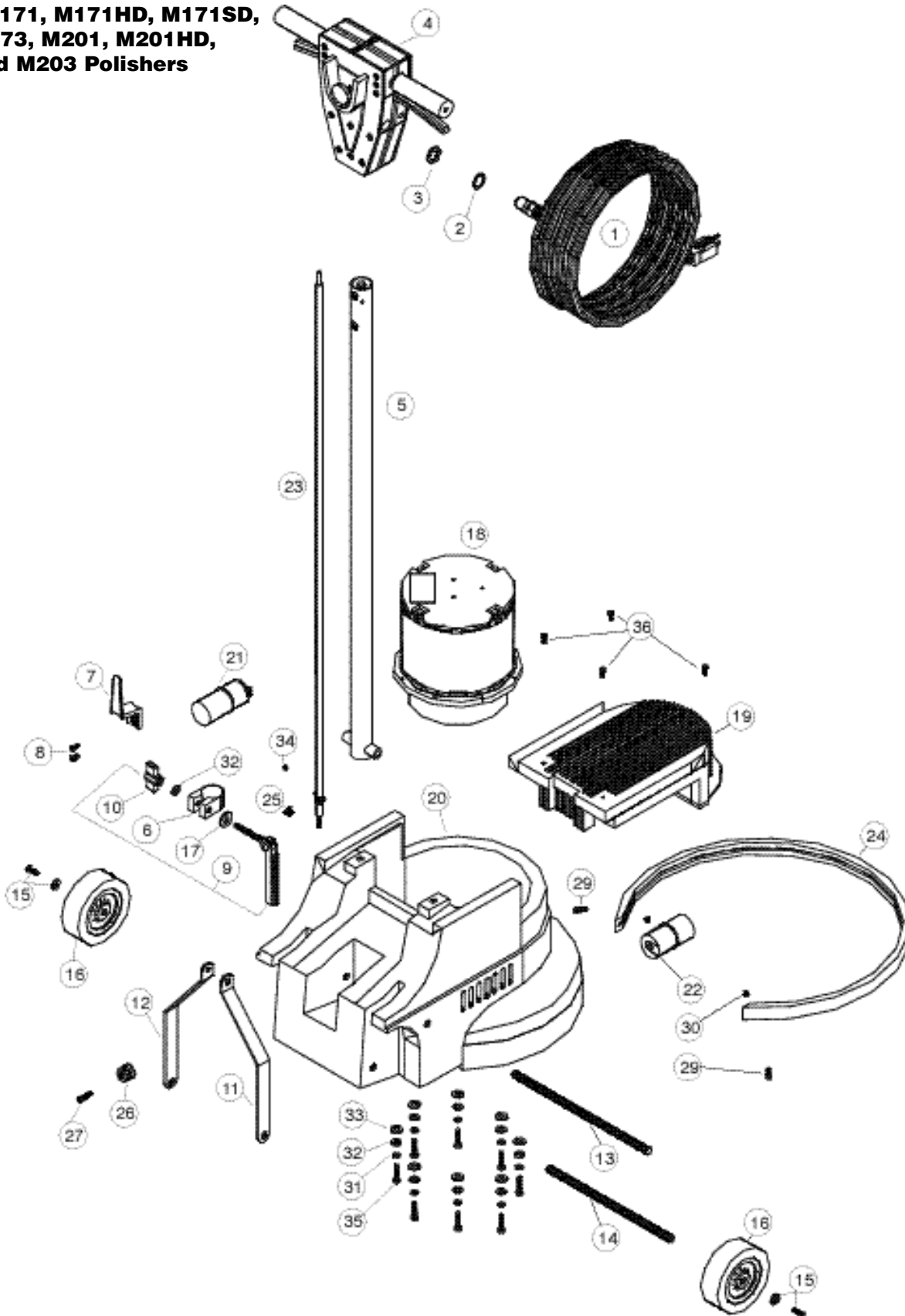


FLOOR MACHINES

Parts for M-SERIES MACHINES

Models M171, M171HD, M171SD,
M172, M173, M201, M201HD,
M202, and M203 Polishers



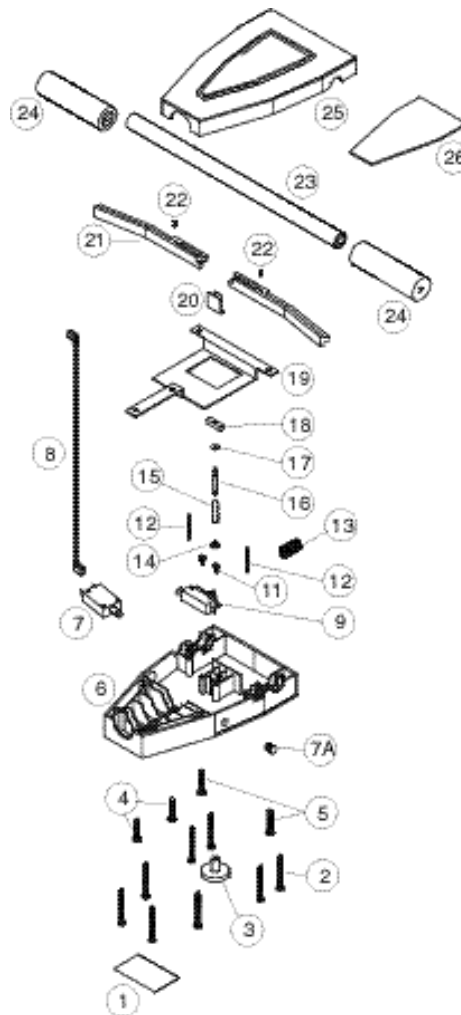
FLOOR MACHINES

Parts for M-SERIES MACHINES

Models M171, M171HD, M171SD, M172, M173, M201, M201HD, M202, and M203 Polishers

ref #	order	description	each
1	M1369GS	sub., 14/3 stwa, 50' gray,	32.29
2	SR36	strain relief washer	.68
3	X8008N	nut, lock, 1/2" steel conduit	.16
4	X8001A	handle, front, m-series w/logo	11.84
5	X8011B	handle weldmount w/bushings	36.51
6	X8012	clamp, collar, handle	10.23
7	X8013	cord hook, plated	4.20
8	X8207	screw, 10-24 x 1/2", phph, type "f"	.11
9	X8012A	handle clamp assembly	15.90
10	X8016	knob, plastic, handle release	2.67
11	X8807R	handle brace, right	8.91
12	X8807L	handle brace, left	8.91
13	X8809	pivot shaft, 1/2" x 12-7/8"	7.57
14	X8019	axle wheel	8.11
15	X8020	washer, countersunk, axle	.74
16	X8024	wheel 5" x 1 1/4"	14.06
17	X8028	washer, cam, w/slot	.47
18	X8035	1-1/2 HP motor w/o gear unit M171HD, M171SD, M201HD, M203, M173	256.40
18	X8035HD	1-1/2 HP 175RPM motor with gear unit for M171HD, M171SD, M201HD	555.02
18	X8035-3	1-1/2 HP 300 RPM motor with gear unit for M173, M203	575.60
18	X8045	1 HP motor w/o gear unit M201, M171	224.05
18	X8045-1	1 HP 175 RPM motor with gear unit for M171, M201	512.33
18	X8071	2 speed 1-1/2 HP motor assembly for M202, M172	669.77
18A	X8072	300 RPM gear unit for M173, M203	252.32
18A	X8073	175 RPM gear unit for M171, M171HD, M201, M201HD	231.86
19	X8042A	motor cover	13.39
21	X8040	590 MFD, 110V start capacitor for Doerr 1 HP 175 RPM motor	11.25
21	X8046	35 MFD 240V run capacitor for Doerr 1-1/2 HP Doerr Model #R07559 & G51400	23.46
21	X8056	310 MFD 125V start capacitor for 1 1/2 HP Doerr Model #R07559 & G51400	5.36
22			
23	X8022B	sub., cord, in-line 14/3 sjtwa 49"	9.04
24	X8030I	bumper 38.25" blu/blk	15.15
25	X8151B	plug, plastic, 7/16" hole, for base housing	.11
26	X8258A	bumper, blk, 1.13" od x .75" h	*
27	X8258AS	#8 x 1" phph type "a"	*
28	X8278	3-32 x 1/2" phph, black oxide	.11
29	X8821	screw, 8-32 x 3/4", thph, blk plated	*
30	X8822	spacer, plastic blk, #8 x .25	*
31	X8212	1/4" spring lock washer	.11
32	X8218	washer, flat, sae 5/16"	.11
33	X8219	3/8" sae flat washer	.11
34	X8222	1/4-20 x 3/16" socket set	.11
35	X8226	1/4-20 x 1 1/4 hex head cap	.11
36	X8272	screw, 8-32 x 1/2", truss/ph,	.05

"M" series upgrade handle parts



ref	order	description	each
1	X8418A	warning label	.19
2	X8820	12 x 2 phil flat ts-a	.11
3	X8805	lock out knob	3.47
4	X8819	1/4 x 1-1/4 phil flat mach scr	.11
5	X8818	1/4 x 1-1/2 phil flat tc-f	.11
6	X8002A	bottom handle housing	14.46
7	X8023	circuit breaker, 15a, w/nuts	9.83
7A	X8151C	3/8" hole plug	.11
8	X8009	lead, 14g, blk, 4", w/2 f26	.77
9	X8006	switch bracket	2.54
10	F5P	momentary switch 1901-012104	7.99
11	X8284	8-32 x 3/8" phph, type f	.11
12	X8026	trigger pin	.77
13	X8010	switch spring	.37
14	X8823	lock-out bushing	2.25
15	X8814	spring, od .312, wire di .025	1.28
16	X8804	lock-out rod	.51
17	X8817	#6 sae flat washer, black	.11
18	X8803	lock out stop	.48
19	X8806	plate, handle support	3.21
20	X8061	clip switch lever	.64
21	X8003	handle switches trigger	6.09
22	X8110A	compression spring,	.99
23	X8005	cross bar handle	9.84
24	X8007	handle grip	2.59
25	X8001A	top handle housing	11.84
26	X8815	handle, back, m-series, w/label	*

Fax Orders to 817.551.0719

Orders before 1 PM Ship The Same Day!