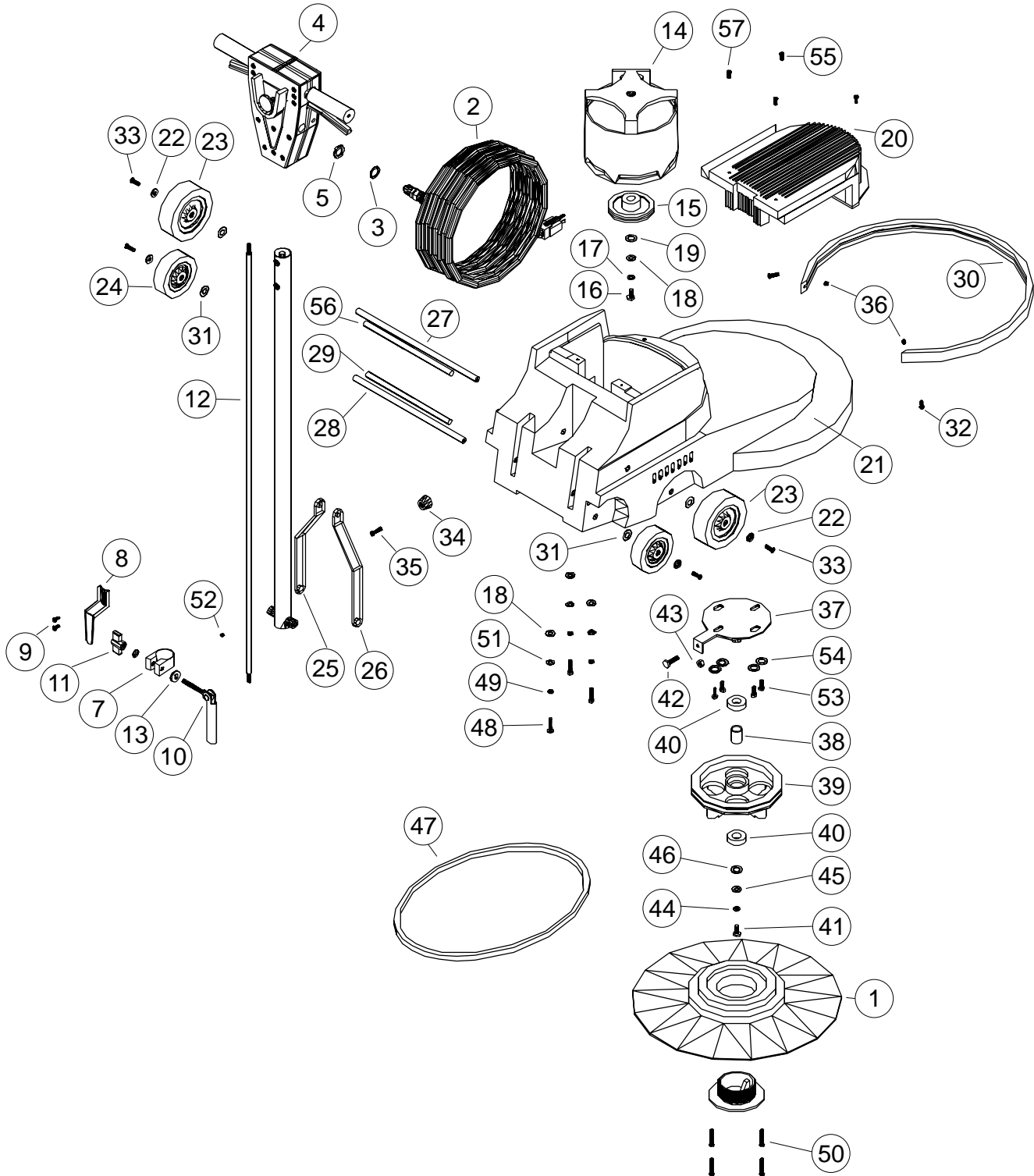


BURNISHERS

Parts for M1200, M1600 and M2000

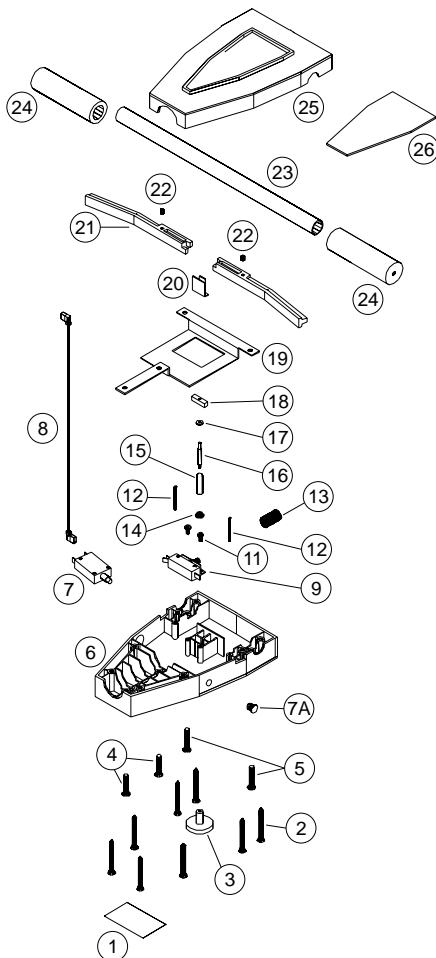


BURNISHERS

Parts for M1200, M1600 and M2000

| ref# | order | description | each |
|------|----------------|--------------------------------------|---------------|
| 1 | X8862 | flexible pad driver kit | 63.16 |
| 2 | M1400GS | sub, 14/3 sjtwa, 75', gray | 28.43 |
| 3 | SR36 | strain relief washer | .68 |
| 4 | X8001A | handle, front, m-series w/logo | 11.84 |
| 5 | X8008N | nut, lock, 1/2" steel conduit | .16 |
| 6 | X8011B | handle weldmount w/ bushings | 36.51 |
| 7 | X8012 | clamp, collar, handle | 10.23 |
| 8 | X8013 | cord hook, plated | 4.20 |
| 9 | X8207 | screw, 10-24 x 1/2" | .11 |
| 10 | X8014 | cam lever assembly | 1.97 |
| 11 | X8016 | knob, plastic, handle release | 2.67 |
| 12 | X8022B | in-line cord w/o s/r, | 9.04 |
| 13 | X8028 | oval cam washer | .47 |
| 14 | X8037-1 | motor M1600 | 521.09 |
| 15 | X8097-2 | pulley | 34.84 |
| 16 | X8216 | 5/16-18 x 3/4" hex cap bolt | .25 |
| 17 | X8217 | washer, lock 5/16" | .11 |
| 18 | X8219 | 3/8" sae flat washer | .11 |
| 19 | X8230 | 3/8" wrought washer | .08 |
| 20 | X8041A | motor cover, new style | 13.39 |
| 21 | X8050A | base housing | 187.91 |
| 22 | X8020 | washer, countersunk, axle | .74 |
| 23 | X8024 | wheel 5" x 1-1/4" | 14.06 |
| 24 | X8025 | wheel black, 4" x 1-1/4" | 10.75 |
| 25 | X8027L | left bracket, brace, handle, w/slot | 9.54 |
| 26 | X8027R | right bracket, brace, handle, w/slot | 9.54 |
| 27 | X8816 | axle, 1/2" dia x 14-1/2" | * |
| 28 | X8812 | axle, 1/2" x 13-1/4" | * |
| 29 | X8813 | pivot shaft, 1/2" x 10" | * |

| ref# | order | description | each |
|------|----------------|--------------------------------|--------------|
| 30 | X8030G | bumper | 10.08 |
| 31 | X8101 | washer, spring | .21 |
| 32 | X8821 | screw, 8-32 x 3/4" | * |
| 33 | X8210 | 1/4-20 x 1/2" phil flat head | .33 |
| 34 | X8258A | bumper, blk, 1.13" od x .75" h | * |
| 35 | X8258AS | #8 x 1" phph type "a" | * |
| 36 | X8822 | spacer, plastic, blk, #8 x .25 | * |
| 37 | X8091 | shaft and plate weldment | 27.76 |
| 38 | X8092 | bearing spacer | 1.48 |
| 39 | X8096 | main pulley | 45.69 |
| 40 | X8098 | bearing | 7.75 |
| 41 | X8215 | 5/16-18 x 3/4" hex cap bolt | .17 |
| 42 | X8227 | 5/16-18 x 1-1/4" hex cap screw | .17 |
| 43 | X8231 | 6/16-18 hex nut | .11 |
| 44 | X8217 | 5/16 spring lock washer | .11 |
| 45 | X8219 | 3/8 sae flat washer | .11 |
| 46 | X8230 | 3/8" wrought washer | .08 |
| 47 | X8099-5 | 40.5 inch deep vee belt type b | 14.36 |
| 48 | X8226 | 1/4-20 x 1 1/4 hex head cap | .11 |
| 49 | X8212 | 1/4" spring lock washer | .11 |
| 50 | X8216 | 5/16-18 x 1 1/2" flat phillips | .25 |
| 51 | X8218 | washer, flat, sae 5/16" | .11 |
| 52 | X8222 | 1/4-20 x 3/16" socket set | .11 |
| 53 | X8223 | 3/8-16 x 3/4" hex cap, grd 5 | .17 |
| 54 | X8230 | 3/8" wrought washer | .08 |
| 55 | X8272 | screw, 8-32 x 1/2", truss/ph, | .05 |
| 56 | X8811 | pivot shaft, 1/2" x 10-1/2" | * |
| 57 | X8821 | screw, 8-32 x 3/4" thph, blk | * |



"M" series handle parts

| ref# | order | description | each |
|------|---------------|--------------------------------|--------------|
| 1 | X8418A | warning label | * |
| 2 | X8820 | 12 x 2 phil flat ts-a | .11 |
| 3 | X8805 | lock out knob | 3.47 |
| 4 | X8819 | 1/4 x 1-1/4 phil flat mach scr | .11 |
| 5 | X8818 | 1/4 x 1-1/2 phil flat tc-f | .11 |
| 6 | X8002A | bottom handle housing | 14.46 |
| 7 | X8023 | circuit breaker, 15a, w/nuts | 9.83 |
| 7A | X8151C | 3/8" hole plug | .11 |
| 8 | X8009 | lead, 14g, blk, 4", w/2 f26 | .77 |
| 9 | X8006 | switch bracket | 2.54 |
| 10 | F5P | momentary switch 1901-012104 | 7.99 |
| 11 | X8284 | 8-32 x 3/8" phph, type f | .11 |
| 12 | X8026 | trigger pin | .77 |
| 13 | X8010 | switch spring | .37 |
| 14 | X8823 | lock-out bushing | 2.25 |
| 15 | X8814 | spring, od .312, wire di .025 | 1.28 |
| 16 | X8804 | lock-out rod | .51 |
| 17 | X8817 | #6 sae flat washer, black | .11 |
| 18 | X8803 | lock out stop | .48 |
| 19 | X8806 | plate, handle support | 3.21 |
| 20 | X8061 | clip switch lever | .64 |
| 21 | X8003 | handle switches trigger | 6.09 |
| 22 | X8110A | compression spring, | .99 |
| 23 | X8005 | cross bar handle | 9.84 |
| 24 | X8007 | handle grip | 2.59 |
| 25 | X8001A | top handle housing | 11.84 |
| 26 | X8815 | handle, back, m-series, w/bl | * |

Fax Orders to 817.551.0719

Orders before 1 PM Ship The Same Day!